

# RGB High Power Indoor

This high-power RGB tape light is designed to deliver vibrant and customisable colour effects with superior brightness. Utilizing high-density 2835 LEDs, it offers dynamic lighting for various indoor environments. With a power consumption of 14.4W/m and a wide beam angle of 120°, this strip light is perfect for creating striking and colourful lighting scenes.



## FEATURES

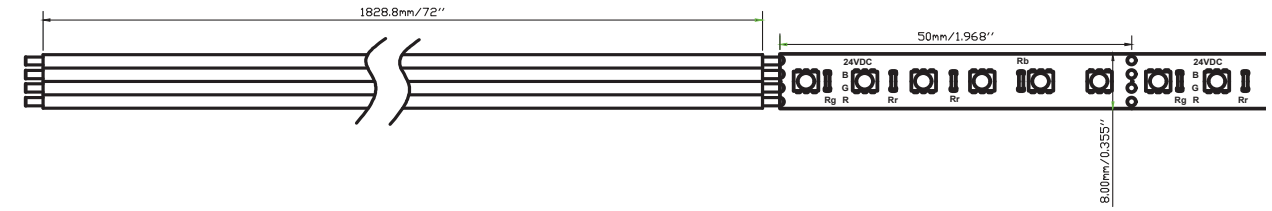
- Customisable RGB lighting for dynamic colour effects.
- 14.4W/m for bright and vivid illumination.
- 36 lumens per watt for rich colour saturation.
- 120 LEDs per meter for even light distribution.
- 3OZ copper PCB for enhanced durability and heat management.
- 120° beam angle for wide and uniform light coverage.
- IP20 rating for indoor use, protecting against dust.
- 50mm cutting intervals for precise customization.
- 5-year warranty for long-term reliability.

## APPLICATIONS

- Architectural
- Entertainment
- Retail
- Commercial

## SPECIFICATIONS

<b>Product Code</b>		<ul style="list-style-type: none"> <li>• ST-ID-RGB-HP-XX-B8 [XX: Length in feet; B: 2835 LED; O: 10mm PCB]</li> <li>• Available in 20 feet: ST-ID-RGB-HP-20-B8</li> </ul>
<b>Electrical</b>	<b>Input Voltage</b>	24V DC
	<b>Power Consumption</b>	4.39W/ft (14.4W/m)
	<b>Efficacy</b>	36Lm/w
<b>Specs</b>	<b>Colour Temperature</b>	RGB
	<b>Lumen Output</b>	158Lm/ft (518Lm/m)
	<b>Beam Angle</b>	120°
<b>LED</b>	<b>Chip Type</b>	2835
	<b># per metre</b>	120
<b>Design</b>	<b>Dimensions (Inches)</b>	.31" W
	<b>Dimensions (Millimeters)</b>	8mm W
	<b>Max Length</b>	20Ft (6M)
	<b>Custom Cuttable</b>	1.97" (50mm)
	<b>IP Rating</b>	IP20
	<b>Approved Location</b>	Indoor
<b>Warranty</b>	5 Years	
<b>Approvals</b>	cULus	



## ACCESSORIES



**ST-ID-RGB-BWBC-6**  
6" Jumper



**ST-ID-RGB-B2BC**  
Splice



**ST-ID-RGB-W2BC-72**  
6' power feed

## DRIVERS

### Non-Dimmable



**MLDR-120-24**  
Indoor/Outdoor driver  
Max. recommended load:  
90W;  
10" x 3 3/8" x 3 3/16" (254 x 85.7 x 80.9mm)



**MLDR-20-24JB**  
Indoor driver  
Max recommended load:  
18W;  
4 1/8" x 4 1/8" x 1 1/2" (104.8 x 104.8 x 38.1mm)



**PGID2448/  
PGID2496**  
Plug-in Driver

## CONTROLLERS



**CNTRL-AMP**  
5-Channel  
High Performance  
Amplifier



**CNTRL-8Z-RGBCCT-WP**  
8 Zone RGB+CCT  
Wall Panel Remote



**CNTRL-RGBCCT**  
3 in 1 LED Strip Controller



**CNTRL-4Z-RGBCCT-RM**  
4-Zone RGB+CCT Remote