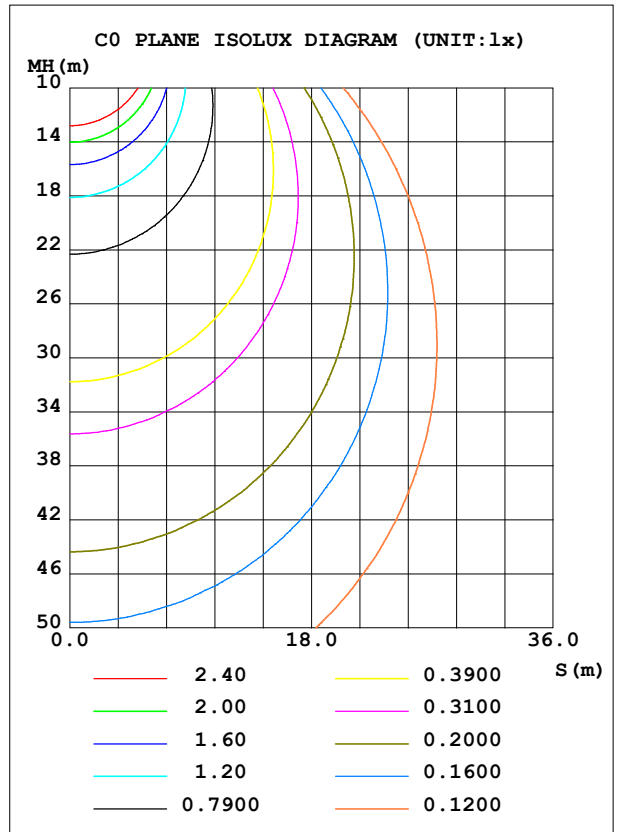
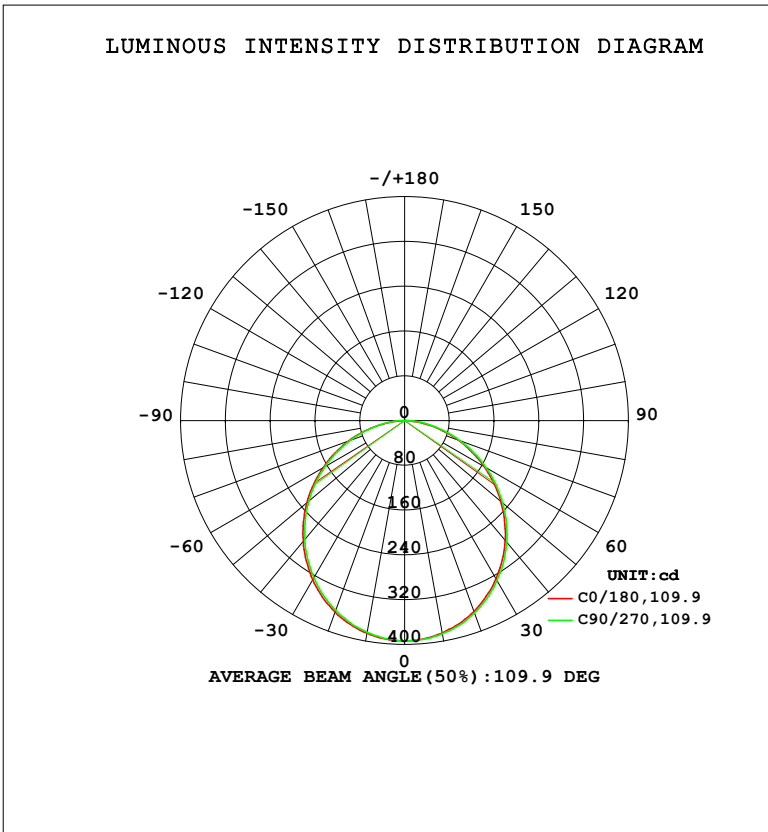


LUMINAIRE PHOTOMETRIC TEST REPORT

|   |       |                  |
|---|-------|------------------|
| Test:U:119.69V I:0.1191A P:14.017W PF:0.9828 Freq:59.98Hz |       |                  |
| UTHDi:0.00% ITHDi:0.00% KDisp:0 Lamp Flux:1096.46x1 lm    |       |                  |
| NAME: DL-FR-5CCT-6-WH                                     | TYPE: | WEIGHT:          |
| SPEC.: 5000K 90   | DIM.: | SERIAL No.:      |
| MFR.: MAGICLITE   | SUR.: | Shielding Angle: |

| DATA OF LAMP      |                 | PHOTOMETRIC DATA |        |                          |           |
|-------------------|-----------------|------------------|--------|--------------------------|-----------|
| MODEL             | DL-FR-5CCT-6-WH | Imax (cd)        | 393.9  | S/MH (C0/180)            | 1.24      |
| NOMINAL POWER (W) | 15              | LOR (%)          | 100.0  | S/MH (C90/270)           | 1.23      |
| RATED VOLTAGE (V) | 120             | TOTAL FLUX (lm)  | 1096.5 | $\eta$ UP, DN (C0-180)   | 0.0, 50.4 |
| NOMINAL FLUX (lm) | 1096.46         | CIE CLASS        | DIRECT | $\eta$ UP, DN (C180-360) | 0.0, 49.6 |
| LAMPS INSIDE      | 1               | $\eta$ up (%)    | 0.0    | CIBSE SHR NOM            | 1.25      |
| TEST VOLTAGE (V)  | 120             | $\eta$ down (%)  | 100.0  | CIBSE SHR MAX            | 1.35      |



C Range: 0 - 360DEG  
 C Interval: 22.5DEG  
 Test Speed: HIGH  
 Temperature: 24.3 °C  
 Operators:  
 Test Date: 2024-01-24

$\gamma$  Range: 0 - 90DEG  
 $\gamma$  Interval: 1.0DEG  
 Test System: EVERFINE GO-SPEX500\_V1 SYSTEM V2.00.460  
 Humidity: 65.0%  
 Test Distance: 3.080m [K=1.0000]  
 Remarks:

ZONAL FLUX DIAGRAM

ZONAL FLUX DIAGRAM:

| $\gamma$ | C0                    | C45    | C90    | C135   | C180   | C225   | C270   | C315   | $\gamma$ | $\Phi$ zone | $\Phi$ total | %lum,lamp |
|----------|-----------------------|--------|--------|--------|--------|--------|--------|--------|----------|-------------|--------------|-----------|
| 10       | 385.6                 | 386.8  | 386.8  | 387.0  | 385.8  | 384.4  | 384.7  | 385.1  | 0- 10    | 37.18       | 37.18        | 3.39,3.39 |
| 20       | 362.8                 | 364.8  | 365.6  | 365.6  | 363.8  | 361.3  | 360.6  | 362.0  | 10- 20   | 106.2       | 143.3        | 13.1,13.1 |
| 30       | 326.6                 | 329.2  | 330.2  | 330.6  | 328.5  | 324.0  | 324.2  | 326.0  | 20- 30   | 159.8       | 303.1        | 27.6,27.6 |
| 40       | 279.8                 | 282.6  | 284.0  | 284.3  | 281.7  | 277.5  | 277.5  | 279.0  | 30- 40   | 190.9       | 494.1        | 45.1,45.1 |
| 50       | 224.4                 | 226.9  | 228.6  | 230.0  | 228.0  | 223.2  | 223.7  | 224.8  | 40- 50   | 196.1       | 690.2        | 62.9,62.9 |
| 60       | 164.0                 | 166.0  | 168.2  | 169.5  | 168.2  | 163.7  | 163.9  | 164.7  | 50- 60   | 175.6       | 865.8        | 79,79     |
| 70       | 102.2                 | 103.9  | 105.6  | 107.2  | 106.0  | 102.2  | 102.3  | 102.8  | 60- 70   | 133.5       | 999.4        | 91.1,91.1 |
| 80       | 40.21                 | 43.72  | 46.77  | 46.60  | 43.61  | 42.77  | 44.69  | 43.17  | 70- 80   | 77.73       | 1077         | 98.2,98.2 |
| 90       | 0.4691                | 0.4731 | 0.5744 | 0.4922 | 0.3105 | 0.3171 | 0.3582 | 0.3397 | 80- 90   | 19.36       | 1096         | 100,100   |
| 100      |                       |        |        |        |        |        |        |        | 90-100   |             |              |           |
| 110      |                       |        |        |        |        |        |        |        | 100-110  |             |              |           |
| 120      |                       |        |        |        |        |        |        |        | 110-120  |             |              |           |
| 130      |                       |        |        |        |        |        |        |        | 120-130  |             |              |           |
| 140      |                       |        |        |        |        |        |        |        | 130-140  |             |              |           |
| 150      |                       |        |        |        |        |        |        |        | 140-150  |             |              |           |
| 160      |                       |        |        |        |        |        |        |        | 150-160  |             |              |           |
| 170      |                       |        |        |        |        |        |        |        | 160-170  |             |              |           |
| 180      |                       |        |        |        |        |        |        |        | 170-180  |             |              |           |
| DEG      | LUMINOUS INTENSITY:cd |        |        |        |        |        |        |        |          | UNIT:lm     |              |           |

Conical surface Flux(90deg): 593.13 lm

%lum = 54.1%

%lamp = 54.1%

Conical surface Flux(130deg): 938.94 lm

%lum = 85.6%

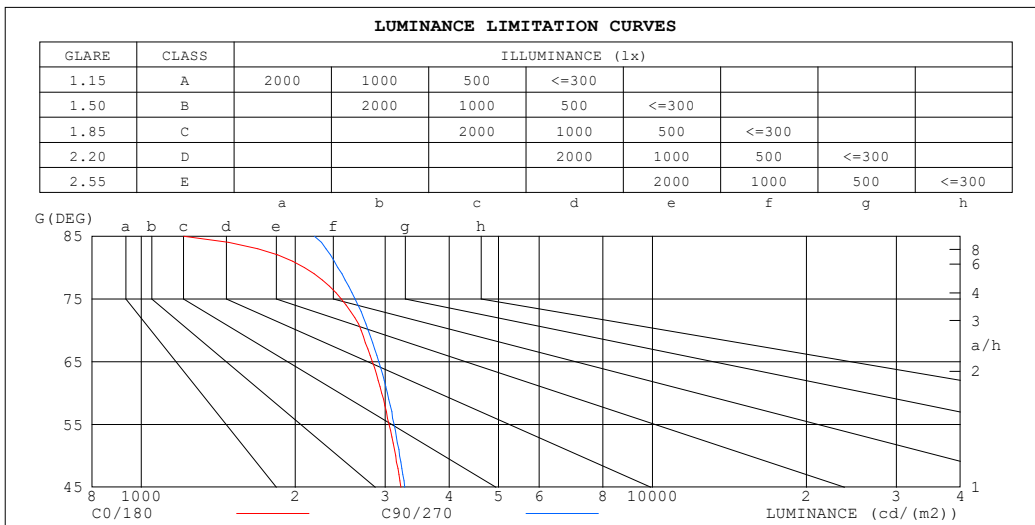
%lamp = 85.6%

C Range: 0 - 360DEG  
 C Interval: 22.5DEG  
 Test Speed: HIGH  
 Temperature:24.3°C  
 Operators:  
 Test Date:2024-01-24

$\gamma$  Range: 0 - 90DEG  
 $\gamma$  Interval: 1.0DEG  
 Test System:EVERFINE GO-SPEX500\_V1 SYSTEM V2.00.460  
 Humidity:65.0%  
 Test Distance:3.080m [K=1.0000]  
 Remarks:

**LUMINANCE LIMITATION CURVES**

|   |       |                  |
|---|-------|------------------|
| Test:U:119.69V I:0.1191A P:14.017W PF:0.9828 Freq:59.98Hz<br>UTHDi:0.00% ITHDi:0.00% KDisp:0 Lamp Flux:1096.46x1 lm |       |                  |
| NAME: DL-FR-5CCT-6-WH   | TYPE: | WEIGHT:          |
| SPEC.: 5000K 90   | DIM.: | SERIAL No.:      |
| MFR.: MAGICLITE   | SUR.: | Shielding Angle: |



| LUMINANCE cd/(m2) |        |         |
|-------------------|--------|---------|
| G (DEG)           | C0/180 | C90/270 |
| 85                | 1210   | 2179    |
| 80                | 2085   | 2425    |
| 75                | 2462   | 2619    |
| 70                | 2690   | 2780    |
| 65                | 2830   | 2914    |
| 60                | 2952   | 3029    |
| 55                | 3053   | 3122    |
| 50                | 3143   | 3202    |
| 45                | 3219   | 3276    |

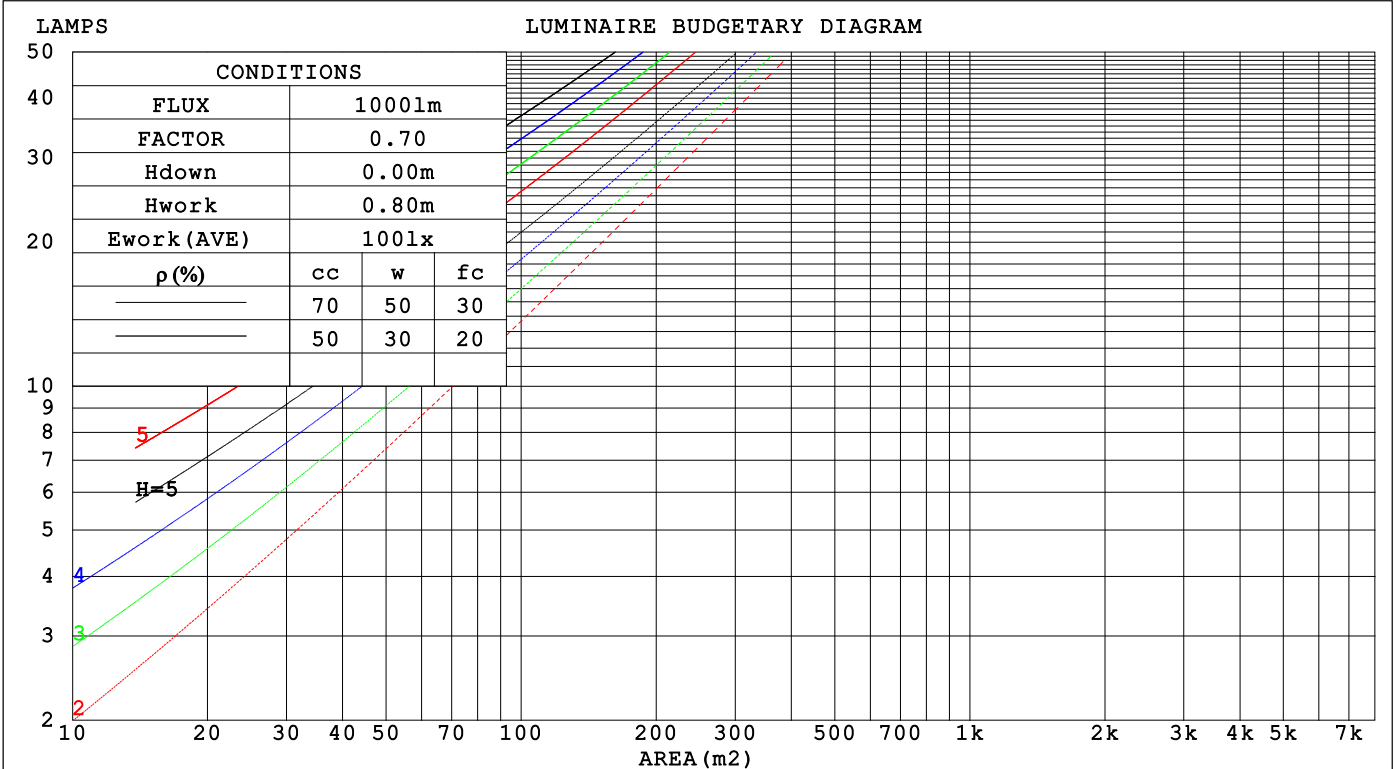
C Range: 0 - 360DEG  
 C Interval: 22.5DEG  
 Test Speed: HIGH  
 Temperature: 24.3°C  
 Operators:  
 Test Date: 2024-01-24

γ Range: 0 - 90DEG  
 γ Interval: 1.0DEG  
 Test System: EVERFINE GO-SPEX500\_V1 SYSTEM V2.00.460  
 Humidity: 65.0%  
 Test Distance: 3.080m [K=1.0000]  
 Remarks:

**CU AND LUMINAIRE BUDGETARY ESTIMATE DIAGRAM**

|   |       |                  |
|---|-------|------------------|
| Test:U:119.69V I:0.1191A P:14.017W PF:0.9828 Freq:59.98Hz |       |                  |
| UTHdi:0.00% ITHdi:0.00% KDisp:0 Lamp Flux:1096.46x1 lm    |       |                  |
| NAME: DL-FR-5CCT-6-WH                                     | TYPE: | WEIGHT:          |
| SPEC.: 5000K 90   | DIM.: | SERIAL No.:      |
| MFR.: MAGICLITE   | SUR.: | Shielding Angle: |

| pcc  | 80%                             |      |      | 70%  |      |      | 50%  |      |      | 30%  |      |      | 10%  |      |      | 0    |
|------|---------------------------------|------|------|------|------|------|------|------|------|------|------|------|------|------|------|------|
| pw   | 50%                             | 30%  | 10%  | 50%  | 30%  | 10%  | 50%  | 30%  | 10%  | 50%  | 30%  | 10%  | 50%  | 30%  | 10%  | 0    |
| pfc  | 20%                             |      |      | 20%  |      |      | 20%  |      |      | 20%  |      |      | 20%  |      |      | 0    |
| RCR  | RCR:Room Cavity Ratio           |      |      |      |      |      |      |      |      |      |      |      |      |      |      |      |
|      | Coefficients of Utilization(CU) |      |      |      |      |      |      |      |      |      |      |      |      |      |      |      |
| 0.0  | 1.19                            | 1.19 | 1.19 | 1.16 | 1.16 | 1.16 | 1.11 | 1.11 | 1.11 | 1.06 | 1.06 | 1.06 | 1.02 | 1.02 | 1.02 | 1.00 |
| 1.0  | 1.04                            | .00  | .96  | 1.02 | .98  | .94  | .97  | .94  | .91  | .94  | .91  | .88  | .90  | .88  | .86  | .84  |
| 2.0  | .91                             | .84  | .78  | .89  | .82  | .77  | .85  | .80  | .75  | .82  | .77  | .74  | .79  | .75  | .72  | .70  |
| 3.0  | .80                             | .71  | .65  | .78  | .70  | .64  | .75  | .68  | .63  | .72  | .67  | .62  | .70  | .65  | .61  | .59  |
| 4.0  | .70                             | .62  | .55  | .69  | .61  | .54  | .67  | .59  | .54  | .64  | .58  | .53  | .62  | .57  | .52  | .50  |
| 5.0  | .63                             | .54  | .47  | .62  | .53  | .47  | .60  | .52  | .46  | .58  | .51  | .46  | .56  | .50  | .45  | .43  |
| 6.0  | .57                             | .48  | .41  | .56  | .47  | .41  | .54  | .46  | .41  | .52  | .45  | .40  | .51  | .45  | .40  | .38  |
| 7.0  | .51                             | .43  | .36  | .51  | .42  | .36  | .49  | .41  | .36  | .48  | .41  | .36  | .46  | .40  | .35  | .33  |
| 8.0  | .47                             | .38  | .33  | .46  | .38  | .32  | .45  | .37  | .32  | .44  | .37  | .32  | .42  | .36  | .32  | .30  |
| 9.0  | .43                             | .35  | .29  | .42  | .35  | .29  | .41  | .34  | .29  | .40  | .34  | .29  | .39  | .33  | .29  | .27  |
| 10.0 | .40                             | .32  | .27  | .39  | .32  | .26  | .38  | .31  | .26  | .37  | .31  | .26  | .36  | .30  | .26  | .24  |



C Range: 0 - 360DEG  
 C Interval: 22.5DEG  
 Test Speed: HIGH  
 Temperature:24.3 °C  
 Operators:  
 Test Date:2024-01-24

γ Range: 0 - 90DEG  
 γ Interval: 1.0DEG  
 Test System:EVERFINE GO-SPEX500\_V1 SYSTEM V2.00.460  
 Humidity:65.0%  
 Test Distance:3.080m [K=1.0000]  
 Remarks:

**WEC AND CCEC**

|   |       |                  |
|---|-------|------------------|
| Test:U:119.69V I:0.1191A P:14.017W PF:0.9828 Freq:59.98Hz |       |                  |
| UTHDi:0.00% ITHDi:0.00% KDisp:0 Lamp Flux:1096.46x1 lm    |       |                  |
| NAME: DL-FR-5CCT-6-WH                                     | TYPE: | WEIGHT:          |
| SPEC.: 5000K 90   | DIM.: | SERIAL No.:      |
| MFR.: MAGICLITE   | SUR.: | Shielding Angle: |

| $\rho_{CC}$ | 80%                   |      |      | 70%  |      |      | 50%                             |      |      | 30%  |      |      | 10%  |      |      | 0 |
|-------------|-----------------------|------|------|------|------|------|---------------------------------|------|------|------|------|------|------|------|------|---|
| $\rho_w$    | 50%                   | 30%  | 10%  | 50%  | 30%  | 10%  | 50%                             | 30%  | 10%  | 50%  | 30%  | 10%  | 50%  | 30%  | 10%  | 0 |
| $\rho_{fc}$ | 20%                   |      |      | 20%  |      |      | 20%                             |      |      | 20%  |      |      | 20%  |      |      | 0 |
| RCR         | RCR:Room Cavity Ratio |      |      |      |      |      | Wall Exitance Coefficients(WEC) |      |      |      |      |      |      |      |      |   |
| 0.0         |                       |      |      |      |      |      |                                 |      |      |      |      |      |      |      |      |   |
| 1.0         | .308                  | .175 | .056 | .301 | .172 | .055 | .288                            | .165 | .053 | .276 | .159 | .051 | .264 | .153 | .049 |   |
| 2.0         | .291                  | .159 | .049 | .284 | .157 | .048 | .273                            | .152 | .047 | .262 | .147 | .046 | .252 | .142 | .045 |   |
| 3.0         | .269                  | .143 | .043 | .264 | .141 | .042 | .253                            | .137 | .042 | .244 | .134 | .041 | .235 | .130 | .040 |   |
| 4.0         | .248                  | .129 | .038 | .244 | .127 | .038 | .234                            | .124 | .037 | .226 | .121 | .037 | .218 | .118 | .036 |   |
| 5.0         | .230                  | .117 | .034 | .225 | .116 | .034 | .217                            | .113 | .033 | .210 | .111 | .033 | .203 | .108 | .033 |   |
| 6.0         | .213                  | .107 | .031 | .209 | .106 | .030 | .202                            | .104 | .030 | .195 | .101 | .030 | .189 | .099 | .030 |   |
| 7.0         | .198                  | .098 | .028 | .195 | .097 | .028 | .188                            | .095 | .027 | .182 | .093 | .027 | .177 | .092 | .027 |   |
| 8.0         | .185                  | .091 | .025 | .182 | .090 | .025 | .176                            | .088 | .025 | .171 | .087 | .025 | .166 | .085 | .025 |   |
| 9.0         | .174                  | .084 | .023 | .171 | .083 | .023 | .166                            | .082 | .023 | .161 | .081 | .023 | .156 | .079 | .023 |   |
| 10.0        | .163                  | .078 | .022 | .161 | .078 | .022 | .156                            | .076 | .022 | .152 | .075 | .021 | .147 | .074 | .021 |   |

| $\rho_{CC}$ | 80%                   |      |      | 70%  |      |      | 50%  |      |      | 30%  |      |      | 10%  |      |      | 0 |
|-------------|-----------------------|------|------|------|------|------|--|------|------|------|------|------|------|------|------|---|
| $\rho_w$    | 50%                   | 30%  | 10%  | 50%  | 30%  | 10%  | 50%  | 30%  | 10%  | 50%  | 30%  | 10%  | 50%  | 30%  | 10%  | 0 |
| $\rho_{fc}$ | 20%                   |      |      | 20%  |      |      | 20%  |      |      | 20%  |      |      | 20%  |      |      | 0 |
| RCR         | RCR:Room Cavity Ratio |      |      |      |      |      | Ceiling Cavity Exitance Coefficients(CCEC) |      |      |      |      |      |      |      |      |   |
| 0.0         |                       |      |      |      |      |      |  |      |      |      |      |      |      |      |      |   |
| 1.0         | .190                  | .190 | .190 | .163 | .163 | .163 | .111                                       | .111 | .111 | .064 | .064 | .064 | .020 | .020 | .020 |   |
| 2.0         | .172                  | .132 | .098 | .147 | .114 | .085 | .101                                       | .079 | .059 | .058 | .046 | .035 | .019 | .015 | .011 |   |
| 3.0         | .164                  | .114 | .074 | .141 | .099 | .065 | .097                                       | .068 | .045 | .056 | .040 | .027 | .018 | .013 | .009 |   |
| 4.0         | .157                  | .101 | .058 | .134 | .087 | .051 | .092                                       | .061 | .036 | .053 | .036 | .021 | .017 | .012 | .007 |   |
| 5.0         | .149                  | .091 | .047 | .128 | .078 | .041 | .088                                       | .055 | .029 | .051 | .032 | .017 | .016 | .010 | .006 |   |
| 6.0         | .142                  | .082 | .039 | .122 | .071 | .034 | .084                                       | .050 | .024 | .049 | .029 | .014 | .016 | .010 | .005 |   |
| 7.0         | .135                  | .075 | .033 | .116 | .065 | .029 | .080                                       | .046 | .021 | .047 | .027 | .012 | .015 | .009 | .004 |   |
| 8.0         | .129                  | .069 | .029 | .111 | .060 | .025 | .077                                       | .042 | .018 | .045 | .025 | .011 | .014 | .008 | .004 |   |
| 9.0         | .123                  | .065 | .025 | .106 | .056 | .022 | .073                                       | .039 | .016 | .043 | .023 | .009 | .014 | .008 | .003 |   |
| 10.0        | .117                  | .060 | .022 | .101 | .052 | .020 | .070                                       | .037 | .014 | .041 | .022 | .008 | .013 | .007 | .003 |   |

C Range: 0 - 360DEG  
 C Interval: 22.5DEG  
 Test Speed: HIGH  
 Temperature:24.3°C  
 Operators:  
 Test Date:2024-01-24

$\gamma$  Range: 0 - 90DEG  
 $\gamma$  Interval: 1.0DEG  
 Test System:EVERFINE GO-SPEX500\_V1 SYSTEM V2.00.460  
 Humidity:65.0%  
 Test Distance:3.080m [K=1.0000]  
 Remarks:

**UGR(Unified Glare Rating) Table**

|   |                  |      |      |      |       |                |      |                  |      |      |
|---|------------------|------|------|------|-------|----------------|------|------------------|------|------|
| Test:U:119.69V I:0.1191A P:14.017W PF:0.9828 Freq:59.98Hz<br>UTHDi:0.00% ITHDi:0.00% KDisp:0 Lamp Flux:1096.46x1 lm |                  |      |      |      |       |                |      |                  |      |      |
| NAME: DL-FR-5CCT-6-WH   |                  |      |      |      | TYPE: |                |      | WEIGHT:          |      |      |
| SPEC.: 5000K 90   |                  |      |      |      | DIM.: |                |      | SERIAL No.:      |      |      |
| MFR.: MAGICLITE   |                  |      |      |      | SUR.: |                |      | Shielding Angle: |      |      |
| ceiling/cavity  | 0.7              | 0.7  | 0.5  | 0.5  | 0.3   | 0.7            | 0.7  | 0.5              | 0.5  | 0.3  |
| walls   | 0.5              | 0.3  | 0.5  | 0.3  | 0.3   | 0.5            | 0.3  | 0.5              | 0.3  | 0.3  |
| working plane   | 0.2              | 0.2  | 0.2  | 0.2  | 0.2   | 0.2            | 0.2  | 0.2              | 0.2  | 0.2  |
| Room dimensions   | Viewed crosswise |      |      |      |       | Viewed endwise |      |                  |      |      |
| x = 2H y = 2H   | 16.4             | 17.9 | 16.7 | 18.1 | 18.3  | 16.5           | 18.0 | 16.8             | 18.2 | 18.5 |
| 3H  | 17.9             | 19.3 | 18.2 | 19.5 | 19.8  | 18.1           | 19.5 | 18.3             | 19.7 | 19.9 |
| 4H  | 18.5             | 19.8 | 18.8 | 20.1 | 20.3  | 18.7           | 20.0 | 19.0             | 20.3 | 20.5 |
| 6H  | 18.9             | 20.1 | 19.2 | 20.4 | 20.7  | 19.1           | 20.4 | 19.5             | 20.7 | 21.0 |
| 8H  | 19.0             | 20.2 | 19.3 | 20.5 | 20.8  | 19.3           | 20.5 | 19.6             | 20.8 | 21.1 |
| 12H   | 19.0             | 20.2 | 19.4 | 20.5 | 20.8  | 19.4           | 20.6 | 19.8             | 20.9 | 21.2 |
| 4H 2H   | 17.0             | 18.4 | 17.3 | 18.6 | 18.9  | 17.1           | 18.5 | 17.4             | 18.7 | 19.0 |
| 3H  | 18.7             | 19.9 | 19.1 | 20.2 | 20.5  | 18.8           | 20.0 | 19.2             | 20.3 | 20.6 |
| 4H  | 19.4             | 20.5 | 19.8 | 20.8 | 21.2  | 19.6           | 20.7 | 20.0             | 21.0 | 21.3 |
| 6H  | 19.9             | 20.9 | 20.3 | 21.2 | 21.6  | 20.2           | 21.1 | 20.6             | 21.5 | 21.9 |
| 8H  | 20.1             | 21.0 | 20.5 | 21.3 | 21.7  | 20.4           | 21.3 | 20.8             | 21.7 | 22.0 |
| 12H   | 20.1             | 21.0 | 20.6 | 21.3 | 21.7  | 20.6           | 21.4 | 21.0             | 21.8 | 22.2 |
| 8H 4H   | 19.7             | 20.6 | 20.1 | 21.0 | 21.3  | 19.9           | 20.7 | 20.3             | 21.1 | 21.5 |
| 6H  | 20.4             | 21.1 | 20.8 | 21.5 | 21.9  | 20.6           | 21.3 | 21.1             | 21.7 | 22.2 |
| 8H  | 20.6             | 21.2 | 21.0 | 21.7 | 22.1  | 20.9           | 21.6 | 21.4             | 22.0 | 22.4 |
| 12H   | 20.7             | 21.2 | 21.2 | 21.7 | 22.2  | 21.1           | 21.7 | 21.6             | 22.2 | 22.6 |
| 12H 4H  | 19.7             | 20.5 | 20.2 | 20.9 | 21.3  | 19.9           | 20.7 | 20.3             | 21.1 | 21.5 |
| 6H  | 20.4             | 21.1 | 20.9 | 21.5 | 22.0  | 20.7           | 21.3 | 21.1             | 21.7 | 22.2 |
| 8H  | 20.7             | 21.2 | 21.2 | 21.7 | 22.2  | 21.0           | 21.6 | 21.5             | 22.0 | 22.5 |
| Variations with the observer position at spacings(CIE Pub.117):   |                  |      |      |      |       |                |      |                  |      |      |
| S = 1.0H  | + 0.2 / - 0.2    |      |      |      |       | + 0.2 / - 0.2  |      |                  |      |      |
| 1.5H  | + 0.2 / - 0.3    |      |      |      |       | + 0.2 / - 0.3  |      |                  |      |      |
| 2.0H  | + 0.2 / - 0.3    |      |      |      |       | + 0.2 / - 0.3  |      |                  |      |      |

CIE Pub.117, 1096 lm Total Lamp Luminous Flux Correct (8log(F/F0) = 0.3)  
 Area: 0.111111 m2

C Range: 0 - 360DEG  
 C Interval: 22.5DEG  
 Test Speed: HIGH  
 Temperature:24.3°C  
 Operators:  
 Test Date:2024-01-24

γ Range: 0 - 90DEG  
 γ Interval: 1.0DEG  
 Test System:EVERFINE GO-SPEX500\_V1 SYSTEM V2.00.460  
 Humidity:65.0%  
 Test Distance:3.080m [K=1.0000]  
 Remarks:

**UTILIZATION FACTORS TABLE**

|   |       |                  |
|---|-------|------------------|
| Test:U:119.69V I:0.1191A P:14.017W PF:0.9828 Freq:59.98Hz<br>UTHDi:0.00% ITHDi:0.00% KDisp:0 Lamp Flux:1096.46x1 lm |       |                  |
| NAME: DL-FR-5CCT-6-WH   | TYPE: | WEIGHT:          |
| SPEC.: 5000K 90   | DIM.: | SERIAL No.:      |
| MFR.: MAGICLITE   | SUR.: | Shielding Angle: |

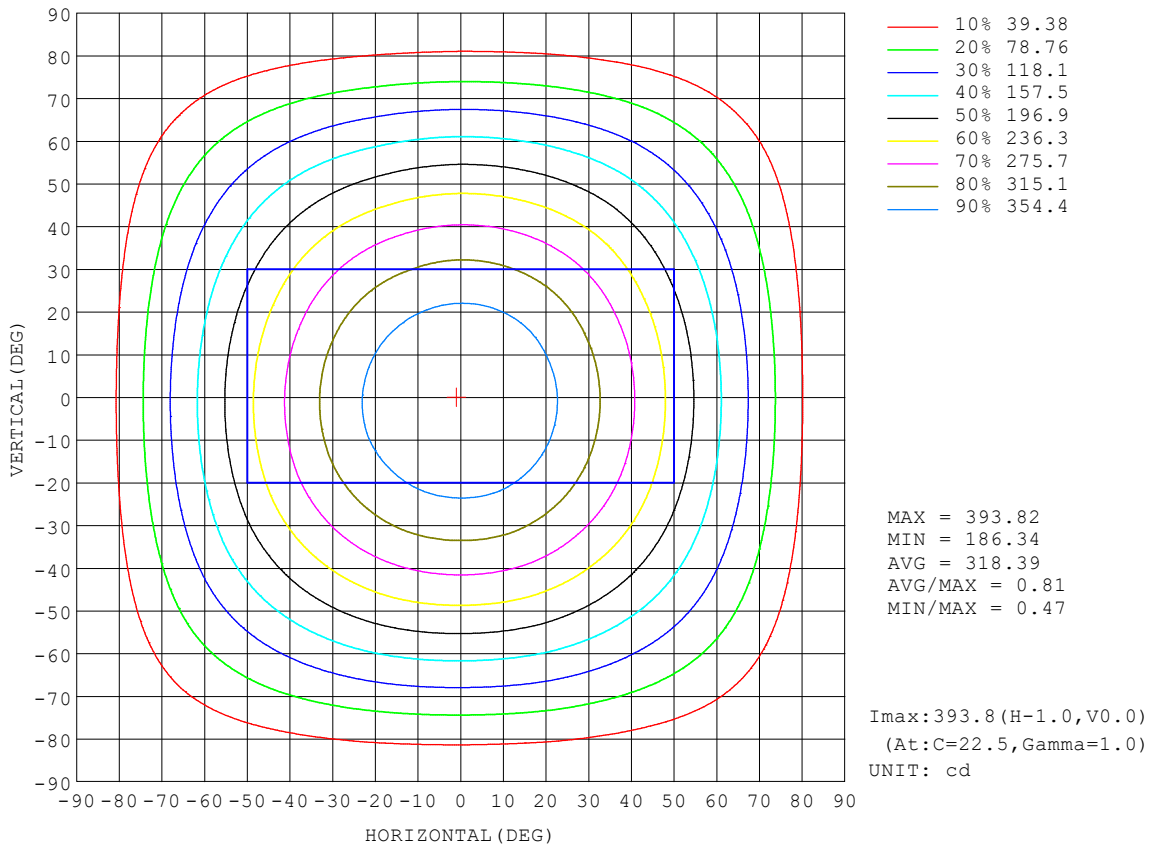
| REFLECTANCE                      |  |     |           |     |     |     |               |     |     |        |
|----------------------------------|--|-----|-----------|-----|-----|-----|---------------|-----|-----|--------|
| Ceiling                          | 0.8  | 0.8 | 0.8       | 0.7 | 0.7 | 0.7 | 0.5           | 0.5 | 0.5 | 0      |
| Walls                            | 0.7  | 0.5 | 0.3       | 0.7 | 0.5 | 0.3 | 0.7           | 0.5 | 0.3 | 0      |
| Working plane                    | 0.2  | 0.2 | 0.2       | 0.2 | 0.2 | 0.2 | 0.2           | 0.2 | 0.2 | 0      |
| ROOM INDEX                       | UTILIZATION FACTORS (PERCENT) $k(RI) \times RCR = 5$ |     |           |     |     |     |               |     |     |        |
| $k = 0.60$                       | 58   | 46  | 39        | 57  | 46  | 39  | 56            | 45  | 39  | 33     |
| 0.80                             | 68   | 56  | 49        | 67  | 56  | 49  | 65            | 55  | 48  | 41     |
| 1.00                             | 76   | 65  | 58        | 75  | 65  | 58  | 73            | 66  | 57  | 50     |
| 1.25                             | 83   | 73  | 66        | 82  | 72  | 65  | 79            | 71  | 64  | 57     |
| 1.50                             | 88   | 78  | 71        | 87  | 78  | 71  | 84            | 76  | 70  | 62     |
| 2.00                             | 95   | 87  | 80        | 93  | 85  | 79  | 90            | 83  | 78  | 70     |
| 2.50                             | 99   | 91  | 85        | 97  | 90  | 84  | 93            | 87  | 82  | 74     |
| 3.00                             | 102  | 95  | 90        | 100 | 94  | 89  | 96            | 91  | 87  | 78     |
| 4.00                             | 106  | 101 | 96        | 104 | 99  | 95  | 100           | 96  | 92  | 83     |
| 5.00                             | 109  | 104 | 100       | 106 | 102 | 98  | 102           | 98  | 95  | 86     |
| ROOM INDEX                       | UF(total)  |     |           |     |     |     |               |     |     | Direct |
| According to DIN EN 13032-2 2004 |  |     | Suspended |     |     |     | SHRNOM = 1.25 |     |     |        |

C Range: 0 - 360DEG  
 C Interval: 22.5DEG  
 Test Speed: HIGH  
 Temperature:24.3°C  
 Operators:  
 Test Date:2024-01-24

$\gamma$  Range: 0 - 90DEG  
 $\gamma$  Interval: 1.0DEG  
 Test System:EVERFINE GO-SPEX500\_V1 SYSTEM V2.00.460  
 Humidity:65.0%  
 Test Distance:3.080m [K=1.0000]  
 Remarks:

**ISOCANDELA DIAGRAM**

|   |       |                  |
|---|-------|------------------|
| Test:U:119.69V I:0.1191A P:14.017W PF:0.9828 Freq:59.98Hz<br>UTHDi:0.00% ITHDi:0.00% KDisp:0 Lamp Flux:1096.46x1 lm |       |                  |
| NAME: DL-FR-5CCT-6-WH   | TYPE: | WEIGHT:          |
| SPEC.: 5000K 90   | DIM.: | SERIAL No.:      |
| MFR.: MAGICLITE   | SUR.: | Shielding Angle: |



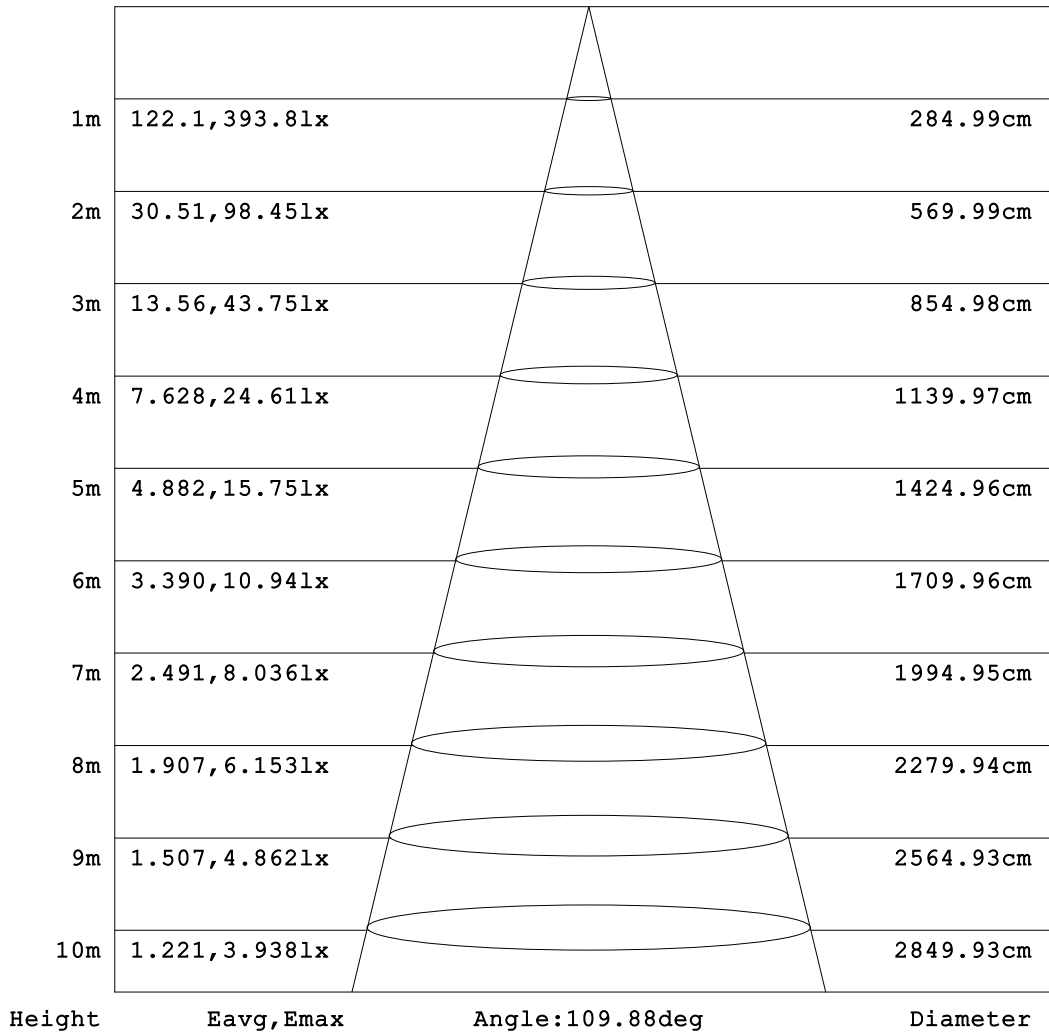
C Range: 0 - 360DEG  
 C Interval: 22.5DEG  
 Test Speed: HIGH  
 Temperature: 24.3 °C  
 Operators:  
 Test Date: 2024-01-24

γ Range: 0 - 90DEG  
 γ Interval: 1.0DEG  
 Test System: EVERFINE GO-SPEX500\_V1 SYSTEM V2.00.460  
 Humidity: 65.0%  
 Test Distance: 3.080m [K=1.0000]  
 Remarks:

**AAI Figure**

|   |       |                  |
|---|-------|------------------|
| Test:U:119.69V I:0.1191A P:14.017W PF:0.9828 Freq:59.98Hz |       |                  |
| UTHDi:0.00% ITHDi:0.00% KDisp:0 Lamp Flux:1096.46x1 lm    |       |                  |
| NAME: DL-FR-5CCT-6-WH                                     | TYPE: | WEIGHT:          |
| SPEC.: 5000K 90   | DIM.: | SERIAL No.:      |
| MFR.: MAGICLITE   | SUR.: | Shielding Angle: |

Flux out:782.1 lm



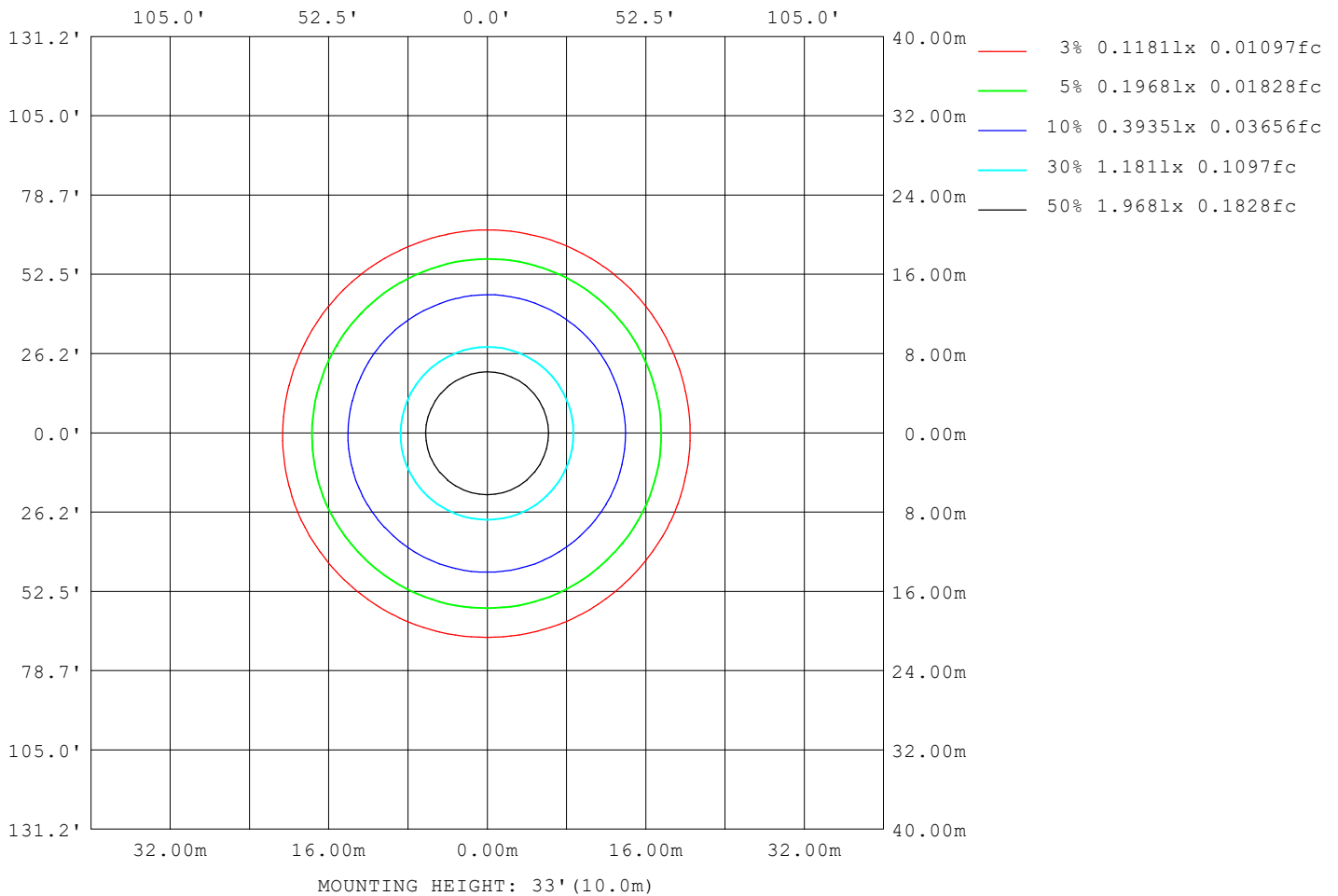
Note: The Curves indicate the illuminated area and the average illumination when the luminaire is at different distance.

C Range: 0 - 360DEG  
 C Interval: 22.5DEG  
 Test Speed: HIGH  
 Temperature: 24.3°C  
 Operators:  
 Test Date: 2024-01-24

γ Range: 0 - 90DEG  
 γ Interval: 1.0DEG  
 Test System: EVERFINE GO-SPEX500\_V1 SYSTEM V2.00.460  
 Humidity: 65.0%  
 Test Distance: 3.080m [K=1.0000]  
 Remarks:

**ISOLUX DIAGRAM**

|   |       |                  |
|---|-------|------------------|
| Test:U:119.69V I:0.1191A P:14.017W PF:0.9828 Freq:59.98Hz<br>UTHDi:0.00% ITHDi:0.00% KDisp:0 Lamp Flux:1096.46x1 lm |       |                  |
| NAME: DL-FR-5CCT-6-WH   | TYPE: | WEIGHT:          |
| SPEC.: 5000K 90   | DIM.: | SERIAL No.:      |
| MFR.: MAGICLITE   | SUR.: | Shielding Angle: |



C Range: 0 - 360DEG  
 C Interval: 22.5DEG  
 Test Speed: HIGH  
 Temperature:24.3°C  
 Operators:  
 Test Date:2024-01-24

γ Range: 0 - 90DEG  
 γ Interval: 1.0DEG  
 Test System:EVERFINE GO-SPEX500\_V1 SYSTEM V2.00.460  
 Humidity:65.0%  
 Test Distance:3.080m [K=1.0000]  
 Remarks:

**LED Avg.L Report**

|   |       |                  |
|---|-------|------------------|
| Test:U:119.69V I:0.1191A P:14.017W PF:0.9828 Freq:59.98Hz<br>UTHDi:0.00% ITHDi:0.00% KDisp:0 Lamp Flux:1096.46x1 lm |       |                  |
| NAME: DL-FR-5CCT-6-WH   | TYPE: | WEIGHT:          |
| SPEC.: 5000K 90   | DIM.: | SERIAL No.:      |
| MFR.: MAGICLITE   | SUR.: | Shielding Angle: |

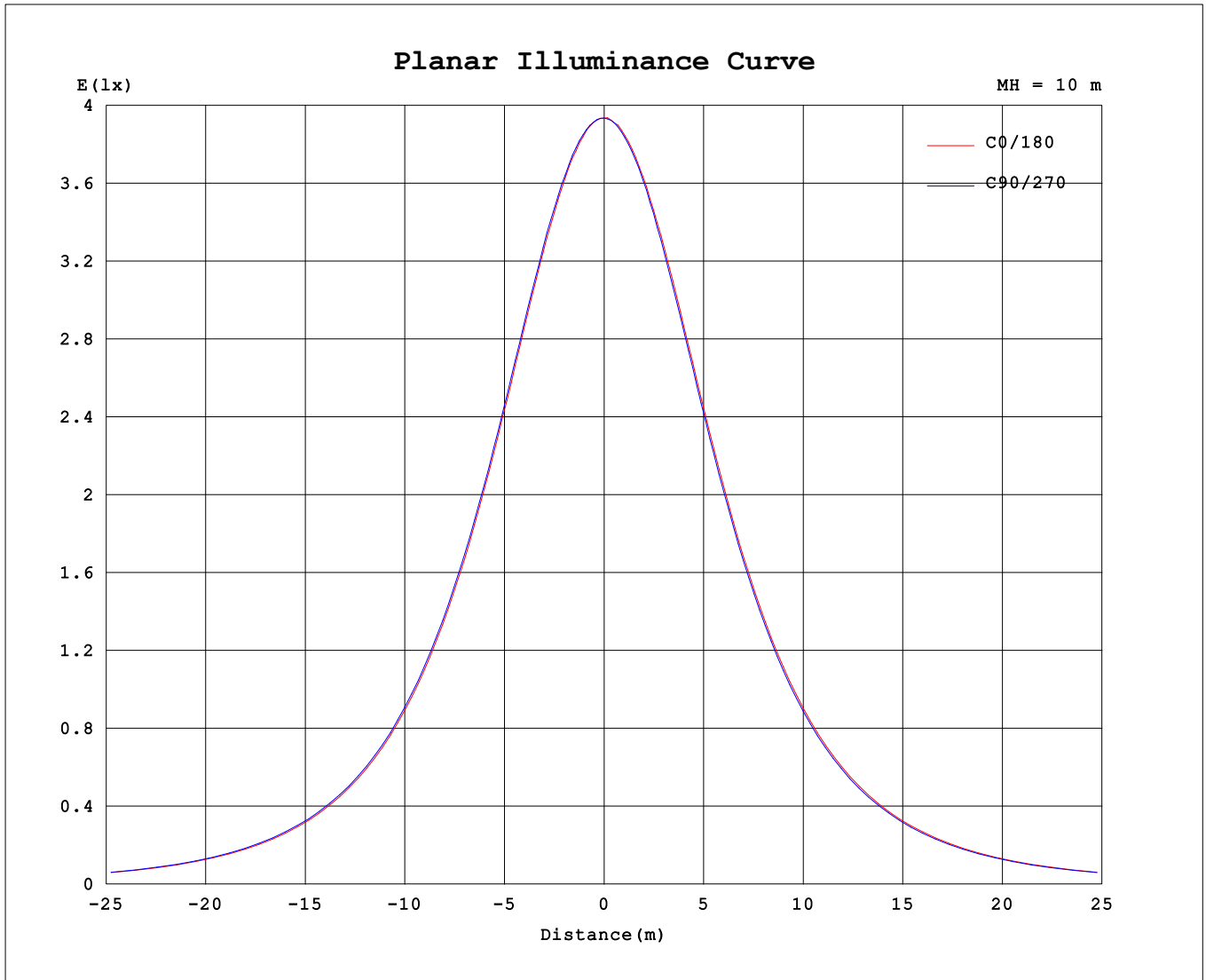
| AvgL             | cd/m2 |
|------------------|-------|
| L_0~180 (65) av  | 2875  |
| L_0~180 (75) av  | 2531  |
| L_0~180 (85) av  | 1346  |
| L_90~270 (65) av | 2874  |
| L_90~270 (75) av | 2571  |
| L_90~270 (85) av | 2100  |
| L_45 (65) av     | 2873  |
| L_45 (75) av     | 2563  |
| L_45 (85) av     | 1659  |

Standard: GB/T 29293-2012

C Range: 0 - 360DEG  
 C Interval: 22.5DEG  
 Test Speed: HIGH  
 Temperature:24.3℃  
 Operators:  
 Test Date:2024-01-24

γ Range: 0 - 90DEG  
 γ Interval: 1.0DEG  
 Test System:EVERFINE GO-SPEX500\_V1 SYSTEM V2.00.460  
 Humidity:65.0%  
 Test Distance:3.080m [K=1.0000]  
 Remarks:

**Planar Illuminance Curve**



C Range: 0 - 360DEG  
 C Interval: 22.5DEG  
 Test Speed: HIGH  
 Temperature: 24.3 °C  
 Operators:  
 Test Date: 2024-01-24

γ Range: 0 - 90DEG  
 γ Interval: 1.0DEG  
 Test System: EVERFINE GO-SPEX500\_V1 SYSTEM V2.00.460  
 Humidity: 65.0%  
 Test Distance: 3.080m [K=1.0000]  
 Remarks:

