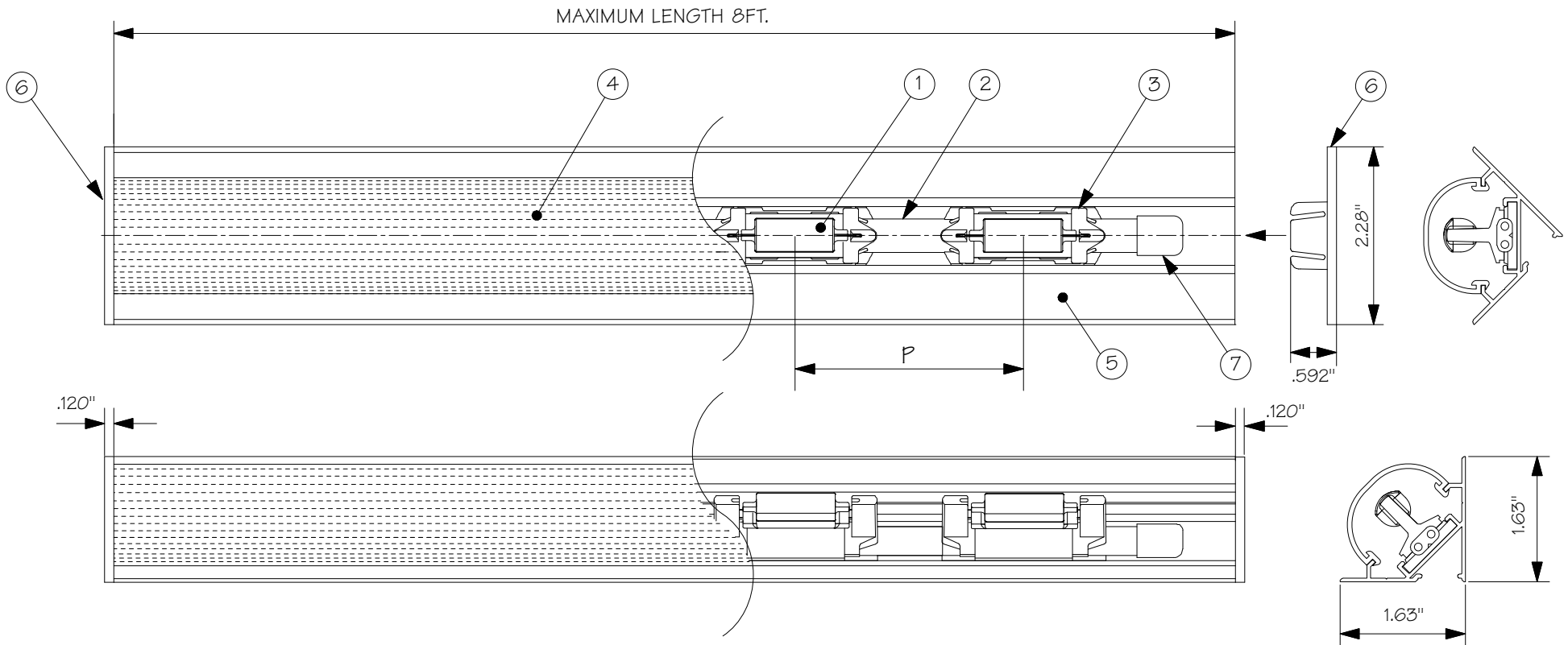


# AVL CHANNEL-0.72 Watt 2000K-2700K LED



CATALOG#	P (INCH)	MAX. SOCKETS/LENGTH
AV(LC,LF)-(SA,WH)-2.4-KC	2.4 ± .075	40/8 FT.
AV(LC,LF)-(SA,WH)-3-KC	3 ± .075	32/8 FT.
AV(LC,LF)-(SA,WH)-4-KC	4 ± .075	24/8 FT.
AV(LC,LF)-(SA,WH)-6-KC	6 ± .075	16/8 FT.

0.72 WATT LED 24VAC OR 24VDC / 30mA				
PART#	LED CODE	COLOR	LUMEN	LIFE
AVLED-KC	KC	2000K-2700K	25 Lm MAX.	40,000-50,000 HOURS

**STYLE/LENS:**

LC= FASCIA/CLEAR  
 LF= FASCIA/FROSTED

**SURFACE FINISH:**

SA=SATIN ALUMINUM  
 WH=WHITE



**TOKISTAR LIGHTING INC.**

1015 E. DISCOVERY LANE  
 ANAHEIM, CA 92801  
 TEL: 714 772 7005 FAX: 714 772 7014  
 email: info@tokistar.com Website: tokistar.com

NO.	PART	MATERIAL
1	LED	SOLID-STATE LED
2	#12 AWG WIRE	PVC INSULATION WITH PLATED COPPER CONDUCTOR
3	LAMP SOCKET	PBT WITH PLATED COPPER CONTACTS
4	LENS	POLYCARBONATE
5	BASE	ALUMINUM
6	END CAP	ABS
7	END CAP	PVC

ADVANTAGE SERIES SUBMITTAL

CATALOG#: AV(LC,LF)-(SA,WH)-\_-KC

DATE: SEPTEMBER 27, 2013

DRAWN BY: R. CORDOVA

SCALE: 1:2

WEIGHT: 248 g/ft.