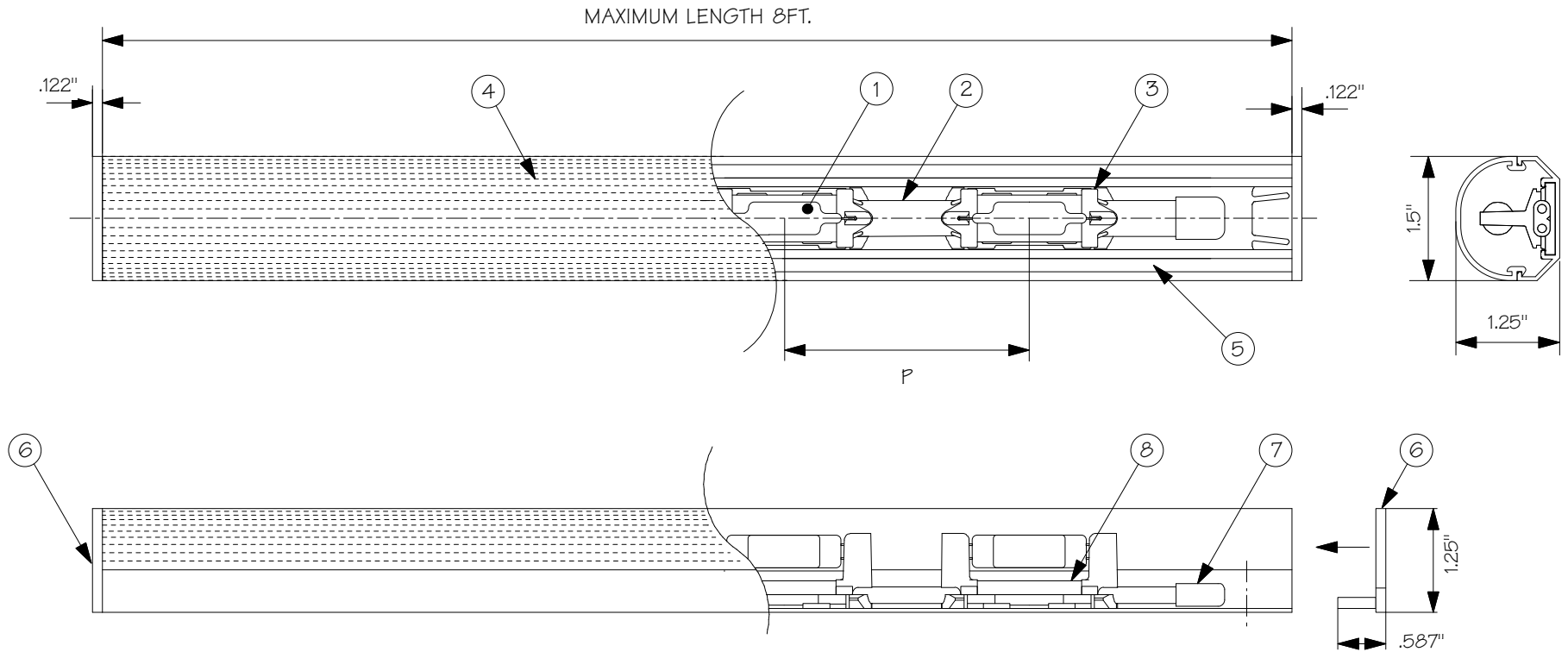


AVC Series-5 Watt XENON LAMP



CATALOG#	P (INCH)	MAX. SOCKETS/LENGTH
AV(CC,CF)-(SA,WH,PA,PG)-3-X5	3 ± .075	32/8 FT.
AV(CC,CF)-(SA,WH,PA,PG)-4-X5	4 ± .075	24/8 FT.
AV(CC,CF)-(SA,WH,PA,PG)-6-X5	6 ± .075	16/8 FT.

5.0 WATT XENON-GAS LAMP 24VAC/210mA				
PART#	LAMP CODE	COLOR	LUMEN	LIFE
XB-5F	X5	2400K	40 Lm	20,000 HOURS

STYLE/LENS:
 CC=NO FASCIA/CLEAR
 CF=NO FASCIA/FROSTED

SURFACE FINISH:
 SA=SATIN ALUMINUM
 WH=WHITE
 PA=POLISHED ALUMINUM
 PG=POLISHED GOLD

NO.	PART	MATERIAL
1	LAMP	XENON-GAS LAMP
2	#12 AWG WIRE	PVC INSULATION WITH PLATED COPPER CONDUCTOR
3	LAMP SOCKET	PBT WITH PLATED COPPER CONTACTS
4	LENS	POLYCARBONATE
5	BASE	ALUMINUM
6	END CAP	ABS
7	END CAP	PVC
8	REFLECTOR	ALUMINUM



TOKISTAR LIGHTING INC.

1015 E. DISCOVERY LANE
 ANAHEIM, CA 92801
 TEL: 714 772 7005 FAX: 714 772 7014
 email: info@tokistar.com Website: tokistar.com

ADVANTAGE SERIES SUBMITTAL

CATALOG#: AV(CC,CF)-(SA,WH,PA,PG)-X5

DATE: JULY 28, 2010

DRAWN BY: R. CORDOVA

SCALE: 1:2

WEIGHT: 197 g/ft.